

2026 CATALOGUE

# Infectious Immunology

Diagnostic Solutions for  
Human Infectious Diseases

# INFECTIOUS IMMUNOLOGY

- 1 **Vircell, company profile**
- 2 ● **Our Infectious Immunology Solutions**
- 4 **Pathogens Availability Guide**
- 6 **VirClia®**  
Fully automated chemiluminescent immunoassays (CLIA) in monotest format for the diagnosis of infectious diseases.
- 11 **Vircell® External Control**  
External Controls that ensure reliable workflows by reducing errors, supporting consistency, and enabling reproducible results across instruments and operators.
- 12 **ELISA**  
Enzyme-linked immunosorbent assays for detecting antibodies against infectious diseases in human serum/plasma samples.
- 15 **IFA**  
Indirect immunofluorescence assays to detect antibodies against viruses, bacteria, parasites and fungi.
- 16 **DFA**  
Direct fluorescence assays for antigen detection in cell culture and clinical samples.
- 17 **Agglutination**  
The complete solution for the diagnosis of human brucellosis: Brucellacapt® and Rose Bengal.
- 17 **VIRapid®**  
Immunochromatographic tests for antigen and antibody detection against infectious diseases. High value-added products in multitest format.
- 18 **Transport Medium**  
Collection and transport system for viruses, chlamydia and mycoplasma.
- 19 ● **Cell Lines**  
Accessible cell culture for human clinical virology. Ready-to-use and bulk presentations.

# Commitment to Quality and the Environment

At **Vircell**, quality is a commitment that extends across everything we do from research and development to production and customer support. Our accreditation to international standards provides confidence in the consistency and reliability of our products and services.

In addition, we actively participate in recognized **External Quality Assessment (EQA) programs**, including QCMD, UKNEQAS, SEIMC, LABQUALITY, INSTAND, CAP, PROGBA, TODAY and RCPAQAP, to ensure the accuracy and reliability of our laboratory results.

## IVD devices with CE marking

Products included in this catalogue which bear CE marking have been assessed in accordance with the applicable requirements of Regulation (EU) 2017/746 of the European Parliament and of the Council of 5 April 2017 on in Vitro diagnostic medical devices. By affixing the CE marking Vircell, S.L. documents that the device is in conformity with all relevant requirements. Where required, the CE marking is accompanied by the identification number of the corresponding notified body.



## ISO 13485 - TÜV SÜD

Vircell is certified under ISO 13485 by TÜV SÜD for the design, development, manufacture and distribution of reagents, kits, equipment and software for in vitro diagnostics of infectious diseases using immunological and molecular methods. This certification, together with the company's participation in the Medical Device Single Audit Program (MDSAP), ensures compliance with regulatory requirements of the United States and Canada, and demonstrates Vircell's ongoing commitment to quality, safety and global market access.



## ISO 9001 AENOR - IQNet

Vircell has implemented and maintains a Quality Management System which has fulfilled the requirements of the standard ISO 9001 since 1998.



## ISO 14001 AENOR - IQNet

ISO 14001 is a globally recognized standard for an environmental management system. This standard defines the requirements for controlling and improving the organization's environmental impact. This standard was first implemented by Vircell in 2016.



## Leaders in infectious diseases testing

Founded in 1991, **Vircell** is a leading developer of ready-to-use kits for the diagnosis of infectious diseases with successful operations in over 95 countries.

**Vircell**, highly specialized in research & development, offers complete diagnostics solutions by means of different techniques, ranging from the traditional cell culture to the most innovative developments in the field of molecular biology.

Since the very beginning, we have focused on producing the highest quality reagents alongside providing accessible technical staff to ensure prompt and personal assistance in their use.

Vircell, S.L.  
Headquarters & Manufacturing Plant

📍 Parque Tecnológico de la Salud  
Calle Avicena, 8  
18016 Granada, Spain

☎ +34 958 441 264

✉ info@vircell.com

Vircell Spain, S.L.U. Headquarters

📍 Pol. Ind. Dos de Octubre  
Plaza Domínguez Ortiz 1  
18320 Santa Fe, Granada

☎ +34 958 181 106

✉ pedidos@vircell.com

Barcelona Branch Office

📍 Pallars 99, Oficina 23  
08018 Barcelona

☎ +34 933 099 530

Madrid Branch Office

📍 Capitán Haya 1, Planta 16  
28020 Madrid

☎ +34 913 457 903

# Our Infectious Immunology Solutions

## VirClia®

### CHEMILUMINESCENCE IN MONOTEST

- **Fully automated CLIA technology:** excellent sensitivity and turnaround time.
- The true **monotest concept:** each strip incorporates a calibrator and a negative control.
- Extensive menu: **more than 95 references.**
- **Time-saving:** automated pipetting from primary tubes.
- All reagents included and ready-to-use.
- Cost-effective: no extra consumption of reagents required.



## ELISA

### ENZYME-LINKED IMMUNOSORBENT ASSAYS

- **Ready-to-use reagents.**
- Sample predilution is not necessary.
- **Colour-coded plates** with individual break-apart wells.
- Semiquantitative protocols available for some parameters.
- **µ-Capture technique** for TORCH IgM determinations.
- G/M kits allow for customized testing of IgG and/or IgM.
- Suitable for **automated ELISA systems.**



## IFA

### INDIRECT IMMUNOFLUORESCENCE ASSAYS

- **Single and Multitest kits** available.
- Comprehensive panel of products widely recognized in scientific literature.
- Complete kits with **ready-to-use reagents.**
- Fully coated separated wells to facilitate the reading of the results.



# DFA

## DIRECT IMMUNOFLUORESCENCE ASSAYS

- Antigen detection in **cell culture** and **clinical samples**.
- **Single and Multitest kits** available.
- Staining kits contain monoclonal antibodies, PBS, mounting medium and controls.



# Agglutination

## BRUCELLACAPT® 1

- Single-step immunocapture assay for the detection of **total anti-Brucella antibodies**.
- Especially recommended for the diagnosis of **chronic brucellosis** and treatment follow-up.
- The highest sensitivity and specificity recognized in international scientific literature.
- **Patented** and **unique** in the market.

## ROSE BENGAL 2

- Rapid card test for the detection of **agglutinating anti-Brucella antibodies** in human serum.
- Widely used as a screening test.



# VIrapid®

## IMMUNOCHROMATOGRAPHIC TESTS

- **Rapid detection** with visual or automatic reading in just a few minutes.
- Specific and highly purified antigens or antibodies in both conjugates and lines.
- Product control line **included in each device**.



# Pathogens Availability Guide

DISEASE GROUP	PATHOGENS	TYPE	
		SINGLE TEST	MULTI TEST
Fungal infections	<i>Aspergillus fumigatus</i>	●	
	<i>Candida</i> spp.	●●	
Gastrointestinal infections	<i>Clostridium difficile</i>	●	
	<i>Helicobacter pylori</i>	●●	
	<i>Strongyloides stercoralis</i>	●	
Mononucleosis	Epstein-Barr virus	●●	●
Respiratory infections	Adenovirus	●●	●
	<i>Bordetella pertussis</i>	●	●
	<i>Chlamydomyophila pneumoniae</i>	●●●	●
	Influenza virus	●●	●●
	<i>Legionella pneumophila</i>	●●●	●●
	<i>Mycoplasma pneumoniae</i>	●●●	●
	Parainfluenza virus	●●	●●
	Respiratory syncytial virus	●●	●●
	SARS-CoV-2	●	
STDs	<i>Chlamydia trachomatis</i>	●●	
	<i>Herpes simplex virus 2</i>	●●	
	<i>Treponema pallidum</i>	●●	
TORCH	Cytomegalovirus	●●●	
	Herpes simplex virus 1	●●	
	Parvovirus	●●	
	<i>Toxoplasma gondii</i>	●●	
	Rubella	●●	
Vaccine-preventable infections	<i>Corynebacterium diphtheriae</i>	●	
	Measles virus	●●	
	Mumps virus	●●	
	<i>Clostridium tetani</i>	●	
	Varicella-zoster virus	●●	

● VIRCLIA®

● ELISA

● IFA

● DFA

● AGGLUTINATION

● VIRAPID®

DISEASE GROUP	PATHOGENS	TYPE	
		SINGLE TEST	MULTI TEST
Vector-borne infections	<i>Borrelia</i> spp.	●	
	Chikungunya virus	● ●	
	Dengue virus	● ●	
	<i>Trypanosoma cruzi</i>	● ● ●	
	<i>Leishmania</i> spp.	● ● ●	
	<i>Rickettsia conorii</i>	● ● ●	
	<i>Rickettsia typhi</i>	●	
	Ross River virus	● ●	
	Tick-borne encephalitis virus	●	
	West Nile virus	●	
	Zika virus	● ●	
Zoonosis	<i>Bartonella henselae</i>	●	●
	<i>Bartonella quintana</i>		●
	<i>Brucella</i> spp.	● ● ●	
	<i>Coxiella burnetii</i>	● ● ●	●
	<i>Echinococcus granulosus</i>	● ● ●	
	<i>Leptospira</i> spp.	● ●	
	<i>Francisella tularensis</i>	● ●	
Other infections	Hepatitis E virus	●	
	Human herpesvirus	●	

# VirClia® Lotus

## The revolution in infectious serology

### Random access, continuous loading

VirClia® Lotus accepts any combination of samples and reagents, regardless of the instrument status. Even while running, it remains accessible for reagent and sample addition.

### Total flexibility

This true monotest solution allows the laboratory to run esoteric and low-volume infectious serology tests daily, alongside the laboratory routine.

### STAT function

Urgent samples can be prioritized. With VirClia® Lotus, STAT test requests are given the highest priority for processing.

### Positive identification of samples & strips

VirClia® Lotus built-in scanner allows for full traceability of both samples and strips, avoiding clerical errors.

### Sample primary tubes

Save hands-on-time using primary tubes (11-16 mm) directly in VirClia® Lotus, avoiding the inconvenience of transferring samples or performing external predilutions.



#### FEATURES

##### Method

Chemiluminescence immunoassay (CLIA)

##### Operation mode

Continuous loading, random access

##### Throughput

40 test in 90 min (first results in 70 min, next every 35 sec)

##### Urgent Samples Management

STAT function

##### Multiparameter

Full compatibility with all VirClia® assays

##### Sample loading capacity

50 Primary tubes, 50 dilution tubes and 6 bottles of diluent

##### Strip loading capacity

39 in loading rotor and 40 in reaction rotor

##### Sample tubes

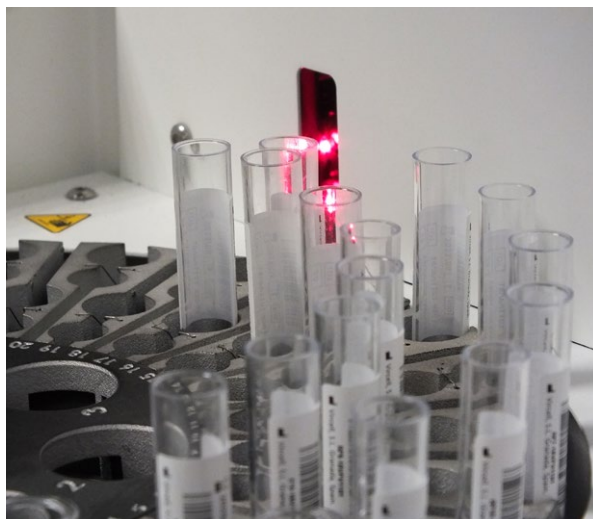
Primary tube (11-16 mm diameter)

##### Predilution

Automatic predilution if required

##### Dimensions and weight

W 75 cm x D 74 cm x H 65 cm. 70 kg (max)





### FUNGAL INFECTIONS

DESCRIPTION	CAT. No.	CLASS	PACK SIZE
ASPERGILLUS GALACTOMANNAN Ag VIRCLIA® MONOTEST	VCM073	CE <sub>0123</sub> IVDR	24 tests
INVASIVE CANDIDIASIS (CAGTA) VIRCLIA® IgG MONOTEST	VCM094	CE	24 tests



### GASTROINTESTINAL INFECTIONS

DESCRIPTION	CAT. No.	CLASS	PACK SIZE
CLOSTRIDIUM DIFFICILE GDH Ag VIRCLIA® MONOTEST	VCM108	CE <sub>0123</sub> IVDR	24 tests
CLOSTRIDIUM DIFFICILE TOXIN A+B Ag VIRCLIA® MONOTEST	VCM109	CE <sub>0123</sub> IVDR	24 tests
HELICOBACTER PYLORI VIRCLIA® Ag MONOTEST	VCM103	CE <sub>0123</sub> IVDR	24 tests
HELICOBACTER PYLORI VIRCLIA® Ag MONOTEST	VCM103-PL	CE <sub>0123</sub> IVDR	48 tests
HELICOBACTER PYLORI VIRCLIA® IgA MONOTEST	VCM029	CE	24 tests
HELICOBACTER PYLORI VIRCLIA® IgG MONOTEST	VCM030	CE	24 tests
STRONGYLOIDES STERCORALIS VIRCLIA® IgG MONOTEST	VCM107	CE <sub>0123</sub> IVDR	24 tests



### BACTERIAL RESPIRATORY INFECTIONS

DESCRIPTION	CAT. No.	CLASS	PACK SIZE
BORDETELLA PERTUSSIS TOXIN VIRCLIA® IgG MONOTEST (quantitative)	VCM092	CE	24 tests
CHLAMYDOPHILA PNEUMONIAE VIRCLIA® IgA MONOTEST	VCM016	CE <sub>0123</sub> IVDR	24 tests
CHLAMYDOPHILA PNEUMONIAE VIRCLIA® IgG MONOTEST	VCM017	CE <sub>0123</sub> IVDR	24 tests
CHLAMYDOPHILA PNEUMONIAE VIRCLIA® IgM MONOTEST	VCM018	CE <sub>0123</sub> IVDR	24 tests
LEGIONELLA PNEUMOPHILA SG 1 VIRCLIA® IgG MONOTEST	VCM049	CE	24 tests
LEGIONELLA PNEUMOPHILA SG 1 VIRCLIA® IgM MONOTEST	VCM050	CE	24 tests
LEGIONELLA PNEUMOPHILA SG 1-6 VIRCLIA® IgG+IgM MONOTEST	VCM052	CE	24 tests
MYCOPLASMA PNEUMONIAE VIRCLIA® IgG MONOTEST	VCM062	CE <sub>0123</sub> IVDR	24 tests
MYCOPLASMA PNEUMONIAE VIRCLIA® IgM MONOTEST	VCM064	CE <sub>0123</sub> IVDR	24 tests



## VIRAL RESPIRATORY INFECTIONS

DESCRIPTION	CAT. No.	CLASS	PACK SIZE
ADENOVIRUS VIRCLIA® IgG MONOTEST	VCM002	CE	24 tests
COVID-19 VIRCLIA® IgG MONOTEST	VCM097	CE	24 tests
COVID-19 VIRCLIA® IgM+IgA MONOTEST	VCM098	CE	24 tests
COVID-19 SPIKE QUANTITATIVE VIRCLIA® IgG MONOTEST	VCM100	CE	24 tests
INFLUENZA A VIRCLIA® IgG MONOTEST	VCM042	CE	24 tests
INFLUENZA B VIRCLIA® IgG MONOTEST	VCM045	CE	24 tests
PARAINFLUENZA 1 VIRCLIA® IgG MONOTEST	VCM065	CE	24 tests
PARAINFLUENZA 2 VIRCLIA® IgG MONOTEST	VCM068	CE	24 tests
PARAINFLUENZA 3 VIRCLIA® IgG MONOTEST	VCM071	CE	24 tests
RESPIRATORY SYNCYTIAL VIRUS VIRCLIA® IgG MONOTEST	VCM077	CE	24 tests



## INFECTIOUS MONONUCLEOSIS

DESCRIPTION	CAT. No.	CLASS	PACK SIZE
INFECTIOUS MONONUCLEOSIS HETEROPHILE VIRCLIA® IgM MONOTEST	VCM001	CE	24 tests
EPSTEIN-BARR VCA VIRCLIA® IgG MONOTEST	VCM027	CE <sub>0123</sub> IVDR	24 tests
EPSTEIN-BARR VCA VIRCLIA® IgM MONOTEST	VCM028	CE	24 tests
EPSTEIN-BARR EBNA VIRCLIA® IgG MONOTEST	VCM026	CE	24 tests
EPSTEIN-BARR EA VIRCLIA® IgG MONOTEST	VCM044	CE	24 tests



## SEXUALLY TRANSMITTED DISEASES

DESCRIPTION	CAT. No.	CLASS	PACK SIZE
CHLAMYDIA TRACHOMATIS VIRCLIA® IgA MONOTEST	VCM012	CE <sub>0318</sub>	24 tests
CHLAMYDIA TRACHOMATIS VIRCLIA® IgG MONOTEST	VCM013	CE <sub>0318</sub>	24 tests
CHLAMYDIA TRACHOMATIS VIRCLIA® IgM MONOTEST	VCM015	CE <sub>0318</sub>	24 tests
HERPES SIMPLEX 2 VIRCLIA® IgG MONOTEST	VCM037	CE	24 tests
HERPES SIMPLEX 2 VIRCLIA® IgM MONOTEST	VCM041	CE	24 tests
SYPHILIS VIRCLIA® IgG MONOTEST	VCM085	CE	24 tests
SYPHILIS VIRCLIA® IgG+IgM MONOTEST	VCM086	CE	24 tests
SYPHILIS VIRCLIA® IgM MONOTEST	VCM032	CE	24 tests



## TORCH

DESCRIPTION	CAT. No.	CLASS	PACK SIZE
CYTOMEGALOVIRUS VIRCLIA® IgG AVIDITY MONOTEST	VCM038	CE <sub>0318</sub>	12 tests
CYTOMEGALOVIRUS VIRCLIA® IgG MONOTEST (quantitative)	VCM021	CE <sub>0318</sub>	24 tests

DESCRIPTION	CAT. No.	CLASS	PACK SIZE
CYTOMEGALOVIRUS VIRCLIA® IgM MONOTEST (capture)	VCM022	CE <sub>0318</sub>	24 tests
HERPES SIMPLEX 1 VIRCLIA® IgG MONOTEST	VCM031	CE	24 tests
HERPES SIMPLEX 1 VIRCLIA® IgM MONOTEST	VCM039	CE	24 tests
HERPES SIMPLEX 1+2 VIRCLIA® IgG MONOTEST	VCM034	CE	24 tests
HERPES SIMPLEX 1+2 VIRCLIA® IgM MONOTEST	VCM036	CE <sub>0123</sub> IVDR	24 tests
HERPES SIMPLEX 2 VIRCLIA® IgG MONOTEST	VCM037	CE	24 tests
HERPES SIMPLEX 2 VIRCLIA® IgM MONOTEST	VCM041	CE	24 tests
PARVOVIRUS VIRCLIA® IgG MONOTEST	VCM075	CE	24 tests
PARVOVIRUS VIRCLIA® IgM MONOTEST (capture)	VCM076	CE	24 tests
RUBELLA VIRCLIA® IgG MONOTEST (quantitative)	VCM083	CE <sub>0318</sub>	24 tests
RUBELLA VIRCLIA® IgM MONOTEST (capture)	VCM084	CE <sub>0318</sub>	24 tests
TOXOPLASMA VIRCLIA® IgG AVIDITY MONOTEST	VCM025	CE <sub>0318</sub>	12 tests
TOXOPLASMA VIRCLIA® IgG MONOTEST (quantitative)	VCM087	CE <sub>0318</sub>	24 tests
TOXOPLASMA VIRCLIA® IgM MONOTEST (capture)	VCM088	CE <sub>0318</sub>	24 tests



## VACCINE-PREVENTABLE INFECTIONS

DESCRIPTION	CAT. No.	CLASS	PACK SIZE
DIPHTHERIA VIRCLIA® IgG MONOTEST (quantitative)	VCM006	CE	24 tests
MEASLES VIRCLIA® IgG MONOTEST	VCM054	CE	24 tests
MEASLES VIRCLIA® IgM MONOTEST	VCM057	CE <sub>0123</sub> IVDR	24 tests
MUMPS VIRCLIA® IgG MONOTEST	VCM060	CE	24 tests
MUMPS VIRCLIA® IgM MONOTEST	VCM061	CE	24 tests
TETANUS VIRCLIA® IgG MONOTEST (quantitative)	VCM004	CE	24 tests
VARICELLA-ZOSTER VIRCLIA® IgG MONOTEST	VCM089	CE	24 tests
VARICELLA-ZOSTER VIRCLIA® IgM MONOTEST	VCM091	CE	24 tests



## VECTOR TRANSMITTED DISEASES

DESCRIPTION	CAT. No.	CLASS	PACK SIZE
BORRELIA VIRCLIA® IgG MONOTEST	VCM009	CE <sub>0123</sub> IVDR	24 tests
BORRELIA VIRCLIA® IgM MONOTEST	VCM010	CE	24 tests
CHAGAS VIRCLIA® IgG+IgM MONOTEST	VCM008	CE	24 tests
CHAGAS TESA VIRCLIA® IgG+IgM MONOTEST	VCM099	CE	24 tests
CHIKUNGUNYA VIRCLIA® IgG MONOTEST	VCM059	CE	24 tests
CHIKUNGUNYA VIRCLIA® IgM MONOTEST	VCM063	CE	24 tests
DENGUE VIRCLIA® IgG MONOTEST	VCM023	CE	24 tests
DENGUE VIRCLIA® IgM MONOTEST (capture)	VCM024	CE	24 tests

DESCRIPTION	CAT. No.	CLASS	PACK SIZE
LEISHMANIA VIRCLIA® IgG+IgM MONOTEST	VCM053	CE	24 tests
RICKETTSIA CONORII VIRCLIA® IgG MONOTEST	VCM080	CE	24 tests
RICKETTSIA CONORII VIRCLIA® IgM MONOTEST	VCM082	CE	24 tests
ROSS RIVER VIRUS VIRCLIA® IgG MONOTEST	VCM069	CE	24 tests
ROSS RIVER VIRUS VIRCLIA® IgM MONOTEST	VCM070	CE	24 tests
TICK-BORNE ENCEPHALITIS VIRCLIA® IgG MONOTEST	VCM047	CE <sub>0123</sub> IVDR	24 tests
TICK-BORNE ENCEPHALITIS VIRCLIA® IgM MONOTEST	VCM048	CE	24 tests
WEST NILE VIRUS VIRCLIA® IgG MONOTEST	VCM078	CE	24 tests
WEST NILE VIRUS VIRCLIA® IgM MONOTEST	VCM079	CE	24 tests
ZIKA VIRCLIA® IgG MONOTEST	VCM033	CE	24 tests
ZIKA VIRCLIA® IgM MONOTEST	VCM035	CE	24 tests



## ZOONOSIS

DESCRIPTION	CAT. No.	CLASS	PACK SIZE
BARTONELLA HENSELAE VIRCLIA® IgG MONOTEST	VCM046	CE	24 tests
BARTONELLA HENSELAE VIRCLIA® IgM MONOTEST	VCM043	CE	24 tests
BRUCELLA VIRCLIA® IgG MONOTEST	VCM005	CE	24 tests
BRUCELLA VIRCLIA® IgM MONOTEST	VCM007	CE	24 tests
COXIELLA BURNETII VIRCLIA® IgG MONOTEST	VCM019	CE	24 tests
COXIELLA BURNETII VIRCLIA® IgM MONOTEST	VCM020	CE	24 tests
HYDATIDOSIS VIRCLIA® IgG MONOTEST	VCM040	CE	24 tests
LEPTOSPIRA VIRCLIA® IgM MONOTEST	VCM014	CE	24 tests
TULAREMIA VIRCLIA® IgG+IgM MONOTEST	VCM011	CE	24 tests



## OTHER INFECTIONS

DESCRIPTION	CAT. No.	CLASS	PACK SIZE
HEPATITIS E VIRCLIA® IgG AVIDITY MONOTEST	VCM093	CE <sub>0123</sub> IVDR	12 tests
HEPATITIS E VIRCLIA® IgG MONOTEST (quantitative)	VCM066	CE <sub>0123</sub> IVDR	24 tests
HEPATITIS E VIRCLIA® IgM MONOTEST (capture)	VCM067	CE <sub>0123</sub> IVDR	24 tests
HHV-6 VIRCLIA® IgG MONOTEST	VCM033	CE	24 tests



## INSTRUMENT & SOFTWARE

DESCRIPTION	CAT. No.	CLASS
VIRCLIA® LOTUS	VCLTS-CL	CE IVDR
VIRCOM COMMUNICATIONS SOFTWARE	VCOM	

DESCRIPTION	CAT. No.	CLASS	KIT CONTENTS
SINALDEHYD-2000	VMCON0021		4+4 bottles x 600 ml
ELISA/CLIA VALIDATION SAMPLES KIT	EVVALS		24 vials x 0.2 ml of human serum, containing sodium azide and ProClin™
VERIFICATION KIT VIRCLIA® MONOTEST	VTK		24 monotests
VIRCLIA® EXTRACTION TUBE	VCET001	CE IVDR	26x 3 ml predispensed tubes, 26 plunger filter, 26 sponge swabs
VIRCELL DYE KIT	VDK		1 bottle with 20 ml of 1x dye concentrate; 15 vials with 0.5 ml of 40x dye concentrate; 5 x 96-well uncoated plates; 1 x 20 ml empty bottle
VIRCLIA® AUXILIARY REAGENTS	VCMAR	CE IVDR	Washing solution: 4 x 50 ml (20x); Decontamination solution: 3 x 20 ml
VIRCLIA® AUXILIARY REAGENTS-W1	VCMAR-W1	CE IVDR	Washing solution: 1000 ml (20x)
VIRCLIA® AUXILIARY REAGENTS-DS	VCMAR-DS	CE IVDR	Decontamination solution: 6 x 20 ml
VIRCLIA® AUXILIARY REAGENTS-EDB	VCMAR-EDB	CE IVDR	Serum diluent: 2 x 10 ml
VIRCLIA® AUXILIARY REAGENTS-EDP	VCMAR-EDP	CE IVDR	Plasma diluent: 2 x 20 ml
VIRCLIA® AUXILIARY REAGENTS-TP	VCMAR-TP		25 predilution tubes
VIRCLIA® FRAME	VCFRAME		5 frames
VIRCLIA® LOTUS DYE KIT	VLDK		2 bottles with 20 ml of 1x dye concentrate; 3 vials with 1.8 ml of 4x dye concentrate; 6 x 96-well uncoated plates; 1 empty bottle

## Vircell® External Control

### IMMUNOLOGICAL EXTERNAL CONTROL

Standardized external controls designed to:

- Support sample processing and analysis, including extraction and detection.
- Minimize the risk of inaccurate results and help consistent lab performance.
- Ensure reproducible outcomes across instruments, operators, and testing batches.



DESCRIPTION	CAT. No.	CLASS	PACK SIZE
VIRCELL® ASPERGILLUS GALACTOMANNAN Ag CONTROL	VEC001	CE <sub>0123</sub> IVDR	3 negative and 3 positive lyophilized controls

# ELISA

## ENZYME-LINKED IMMUNOSORBENT ASSAYS



### GASTROINTESTINAL INFECTIONS

DESCRIPTION	CAT. No.	CLASS	PACK SIZE
HELICOBACTER PYLORI ELISA IgA (includes calibrators)	A1022	CE	96 tests
HELICOBACTER PYLORI ELISA IgG (includes calibrators)	G1022	CE	96 tests



### BACTERIAL RESPIRATORY INFECTIONS

DESCRIPTION	CAT. No.	CLASS	PACK SIZE
CHLAMYDOPHILA PNEUMONIAE ELISA IgA	A1007	CE <sub>0123</sub> IVDR	96 tests
CHLAMYDOPHILA PNEUMONIAE ELISA IgG (includes calibrators)	G1007	CE <sub>0123</sub> IVDR	96 tests
CHLAMYDOPHILA PNEUMONIAE ELISA IgM	M1007	CE <sub>0123</sub> IVDR	96 tests
LEGIONELLA PNEUMOPHILA SG 1 ELISA IgG	G1000	CE	96 tests
LEGIONELLA PNEUMOPHILA SG 1 ELISA IgM	M1000	CE	96 tests
LEGIONELLA PNEUMOPHILA SG 1-6 ELISA IgG+IgM	T1001	CE	96 tests
MYCOPLASMA PNEUMONIAE ELISA IgG	G1002	CE	96 tests
MYCOPLASMA PNEUMONIAE ELISA IgG/IgM	G/M1015	CE	96 tests
MYCOPLASMA PNEUMONIAE ELISA IgM	M1002	CE	96 tests



### VIRAL RESPIRATORY INFECTIONS

DESCRIPTION	CAT. No.	CLASS	PACK SIZE
ADENOVIRUS ELISA IgG/IgM	G/M1004	CE	96 tests
INFLUENZA A ELISA IgG/IgM	G/M1007	CE	96 tests
INFLUENZA B ELISA IgG/IgM	G/M1008	CE	96 tests
PARAINFLUENZA 1 ELISA IgG/IgM	G/M1009	CE	96 tests
PARAINFLUENZA 2 ELISA IgG/IgM	G/M1010	CE	96 tests
PARAINFLUENZA 3 ELISA IgG/IgM	G/M1011	CE	96 tests
RESPIRATORY SYNCYTIAL VIRUS ELISA IgG/IgM	G/M1006	CE	96 tests



## INFECTIOUS MONONUCLEOSIS

DESCRIPTION	CAT. No.	CLASS	PACK SIZE
EPSTEIN-BARR EA ELISA IgG	G1205	CE	96 tests
EPSTEIN-BARR EBNA ELISA IgG	G1105	CE	96 tests
EPSTEIN-BARR VCA ELISA IgG	G1005	CE	96 tests
EPSTEIN-BARR VCA ELISA IgM	M1005	CE	96 tests



## SEXUALLY TRANSMITTED DISEASES

DESCRIPTION	CAT. No.	CLASS	PACK SIZE
CHLAMYDIA TRACHOMATIS ELISA IgA	A1017	CE <sub>0318</sub>	96 tests
CHLAMYDIA TRACHOMATIS ELISA IgG/IgM	G/M1017	CE <sub>0318</sub>	96 tests
HERPES SIMPLEX 2 ELISA IgG/IgM (gG2 purified)	G/M1013	CE	96 tests
SYPHILIS ELISA IgG	G1060	CE	96 tests
SYPHILIS ELISA IgG+IgM	T1060	CE	96 tests



## TORCH

DESCRIPTION	CAT. No.	CLASS	PACK SIZE
CYTOMEGALOVIRUS ELISA IgG (includes calibrators)	G1004	CE <sub>0318</sub>	96 tests
CYTOMEGALOVIRUS ELISA IgM CAPTURE	M1004	CE <sub>0318</sub>	96 tests
HERPES SIMPLEX 1 ELISA IgG/IgM (gG1 recombinant)	G/M1017	CE	96 tests
HERPES SIMPLEX 1+2 ELISA IgG/IgM	G/M1016	CE	96 tests
PARVOVIRUS ELISA IgG	G1031	CE	96 tests
PARVOVIRUS ELISA IgM CAPTURE	M1031	CE	96 tests
RUBELLA ELISA IgG (includes calibrators)	G1026	CE <sub>0318</sub>	96 tests
RUBELLA ELISA IgM CAPTURE	M1026	CE <sub>0318</sub>	96 tests
TOXOPLASMA ELISA IgG (includes calibrators)	G1027	CE <sub>0318</sub>	96 tests
TOXOPLASMA ELISA IgM CAPTURE	M1027	CE <sub>0318</sub>	96 tests



## VACCINE-PREVENTABLE INFECTIONS

DESCRIPTION	CAT. No.	CLASS	PACK SIZE
MEASLES ELISA IgG/IgM	G/M1001	CE	96 tests
MUMPS ELISA IgG/IgM	G/M1014	CE	96 tests
RUBELLA ELISA IgG (includes calibrators)	G1026	CE <sub>0318</sub>	96 tests
RUBELLA ELISA IgM CAPTURE	M1026	CE <sub>0318</sub>	96 tests
TETANUS ELISA IgG (includes calibrators)	G1008	CE	96 tests
VARICELLA-ZOSTER ELISA IgG/IgM	G/M1002	CE	96 tests



## VECTOR TRANSMITTED DISEASES

DESCRIPTION	CAT. No.	CLASS	PACK SIZE
CHAGAS ELISA IgG+IgM	T1020	CE	96 tests
CHAGAS TESA ELISA IgG+IgM	T1023	CE	96 tests
CHIKUNGUNYA ELISA IgG	G1010	CE	96 tests
CHIKUNGUNYA ELISA IgM	M1010	CE	96 tests
DENGUE ELISA IgG	G1018	CE	96 tests
DENGUE ELISA IgM CAPTURE	M1018	CE	96 tests
LEISHMANIA ELISA IgG+IgM	T1000	CE	96 tests
RICKETTSIA CONORII ELISA IgG/IgM	G/M1005	CE	96 tests
ROSS RIVER VIRUS ELISA IgG	G1011	CE	96 tests
ROSS RIVER VIRUS ELISA IgM	M1011	CE	96 tests
ZIKA ELISA IgG	G1023	CE	96 tests
ZIKA ELISA IgM	M1023	CE	96 tests



## ZOONOSIS

DESCRIPTION	CAT. No.	CLASS	PACK SIZE
BRUCELLA ELISA IgG	G1003	CE	96 tests
BRUCELLA ELISA IgM	M1006	CE	96 tests
COXIELLA BURNETII ELISA IgG	G1001	CE	96 tests
COXIELLA BURNETII ELISA IgM	M1001	CE	96 tests
HYDATIDOSIS ELISA IgG	G1006	CE	96 tests
LEPTOSPIRA ELISA IgM	M1003	CE	96 tests



## OTHER ELISA PRODUCTS

DESCRIPTION	CAT. No.	CLASS	PACK SIZE
ELISA SORBENT (2 x 1.2 ml)	S001	CE IVDR	92 tests
ELISA SORBENT (100 ml)	S001-100	CE IVDR	4,000 tests
SERUM DILUENT FOR ELISA KITS (500 ml)	B0003	CE IVDR	5,000 tests
WASH BUFFER FOR ELISA KITS (500 ml 20x)	B0001	CE IVDR	3,000 tests

# IFA

## INDIRECT IMMUNOFLUORESCENCE ASSAYS

### SINGLE TESTS



#### BACTERIAL RESPIRATORY INFECTIONS

DESCRIPTION	CAT. No.	CLASS	PACK SIZE
CHLAMYDOPHILA PNEUMONIAE IFA IgG	PCHPNG	CE <sub>0318</sub>	100 tests
CHLAMYDOPHILA PNEUMONIAE IFA IgM	PCHPNM	CE <sub>0318</sub>	100 tests
CHLAMYDOPHILA PNEUMONIAE IFA SLIDE	SCHPN	CE <sub>0318</sub>	100 tests
LEGIONELLA PNEUMOPHILA IFA IgG	PLEPNG	CE	100 tests
LEGIONELLA PNEUMOPHILA IFA IgM	PLEPNM	CE	100 tests
LEGIONELLA PNEUMOPHILA SG 1-6 IFA IgG	PLESXG	CE	100 tests
LEGIONELLA SP IFA IgG	PLESPG	CE	100 tests
MYCOPLASMA PNEUMONIAE IFA IgG	PMYPNG	CE	100 tests
MYCOPLASMA PNEUMONIAE IFA IgM	PMYPM	CE	100 tests



#### VECTOR TRANSMITTED DISEASES

DESCRIPTION	CAT. No.	CLASS	PACK SIZE
CHAGAS IFA IgG+IgM	PCHAG	CE	100 tests
LEISHMANIA IFA IgG	PLEDOG	CE	100 tests
LEISHMANIA IFA SLIDE	SLEDO	CE	100 tests
RICKETTSIA CONORII IFA IgG	PRICOG	CE	100 tests
RICKETTSIA CONORII IFA IgM	PRICOM	CE	100 tests
RICKETTSIA CONORII IFA SLIDE	SRICO	CE	100 tests
RICKETTSIA TYPHI IFA IgG	PRITYG	CE	100 tests
RICKETTSIA TYPHI IFA IgM	PRITYM	CE	100 tests



#### ZOONOSIS

DESCRIPTION	CAT. No.	CLASS	PACK SIZE
BARTONELLA HENSELAE & QUINTANA IFA IgG	PBAHQG	CE	100 tests
BARTONELLA HENSELAE & QUINTANA IFA IgM	PBAHQM	CE	100 tests
COXIELLA BURNETII IFA IgG	PCOBUG	CE	100 tests
COXIELLA BURNETII IFA IgM	PCOBUM	CE	100 tests
COXIELLA BURNETII I+II IFA IgG/IgM/IgA	PCOBU I+II	CE	100 tests
COXIELLA BURNETII IFA SLIDE	SCOBU	CE	100 tests



## FUNGAL INFECTIONS

DESCRIPTION	CAT. No.	CLASS	PACK SIZE
INVASIVE CANDIDIASIS (CAGTA) IFA IgG	PCAALG	CE	100 tests

## MULTITESTS



## RESPIRATORY INFECTIONS

DESCRIPTION	CAT. No.	CLASS	PACK SIZE
<b>PNEUMOBACT</b> <i>L. pneumophila</i> sg 1, <i>M. pneumoniae</i> , <i>C. burnetii</i> , <i>C. pneumoniae</i> and <i>C. psittaci</i>	NBACT	CE <sub>0318</sub>	20 tests
<b>PNEUMOSLIDE IgG</b> <i>L. pneumophila</i> sg 1, <i>M. pneumoniae</i> , <i>C. burnetii</i> , <i>C. pneumoniae</i> , adenovirus, respiratory syncytial virus, influenza A, influenza B, parainfluenza 1, 2 and 3 and cell control	NSLIDEG	CE <sub>0318</sub>	20 tests
<b>PNEUMOSLIDE IgM</b> <i>L. pneumophila</i> sg 1, <i>M. pneumoniae</i> , <i>C. burnetii</i> , <i>C. pneumoniae</i> , adenovirus, respiratory syncytial virus, influenza A, influenza B, parainfluenza 1, 2 and 3 and cell control	NSLIDEM	CE <sub>0318</sub>	10 tests



## OTHER IFA PRODUCTS

DESCRIPTION	CAT. No.	CLASS	PACK SIZE
IFA SORBENT	S002	CE IVDR	100 tests
IFA SORBENT	S002-100	CE IVDR	4,000 tests

# DFA

## DIRECT IMMUNOFLOUORESCENCE ASSAYS

### SINGLE TESTS

DESCRIPTION	CAT. No.	CLASS	PACK SIZE
CYTOMEGALOVIRUS MAb	ACCMV	RUO	80 tests

## MULTITEST AND INDIVIDUAL COMPONENTS

DESCRIPTION	CAT. No.	CLASS	PACK SIZE
<b>RESPIRATORY VIRAL SCREENING &amp; IDENTIFICATION MAb</b> Staining Kit for investigation of adenovirus, influenza A, influenza B, parainfluenza 1, parainfluenza 2, parainfluenza 3 and respiratory syncytial virus by immunofluorescence technique in cell culture and clinical samples	ACRESI	CE	250 / 50 tests
VIRAL SCREENING FITC-MAb	SFMRVS	CE	250 tests
ADENOVIRUS IDENTIFICATION FITC-MAb	IFMADV	CE	50 tests
INFLUENZA A IDENTIFICATION FITC-MAb	IFMINFA	CE	50 tests
INFLUENZA B IDENTIFICATION FITC-MAb	IFMINFB	CE	50 tests
PARAINFLUENZA 1 IDENTIFICATION FITC-MAb	IFMPIV1	CE	50 tests
PARAINFLUENZA 2 IDENTIFICATION FITC-MAb	IFMPIV2	CE	50 tests
PARAINFLUENZA 3 IDENTIFICATION FITC-MAb	IFMPIV3	CE	50 tests
RESPIRATORY SYNCYTIAL VIRUS IDENTIFICATION FITC-MAb	IFMRSV	CE	50 tests

## Agglutination

### BRUCELLACAPT® AND ROSE BENGAL

DESCRIPTION	CAT. No.	CLASS	PACK SIZE
BRUCELLACAPT® (screening/titration)	BRUCAPT	CE	96/24 tests
SERUM DILUENT FOR BRUCELLACAPT®	B0002	CE IVDR	500 ml
ROSE BENGAL	RB001	CE	125 tests

## VIRapid®

### IMMUNOCHROMATOGRAPHIC TESTS

DESCRIPTION	CAT. No.	CLASS	PACK SIZE
<b>VIRAPID® HYDATIDOSIS</b> Detection of <i>Echinococcus granulosus</i> total antibodies	VR004	CE	25 tests
<b>VIRAPID® LEGIONELLA CULTURE</b> Detection and identification of <i>Legionella</i> sp., <i>L. pneumophila</i> sg 1 and <i>L. pneumophila</i> sg 1-15 in samples from bacterial cultures	VR002	CE	25 tests
<b>VIRAPID® MONO M&amp;G</b> Detection of the 4 main serological markers for the EBV infectious mononucleosis (PB HA, VCA IgM, VCA IgG, EBNA IgG)	VR001	CE	25 tests
<b>VIRAPID® TULAREMIA</b> Detection of <i>Francisella tularensis</i> total antibodies	VR006	CE	10 tests

# Transport Medium

FOR THE COLLECTION AND PRESERVATION OF VIRUSES, CHLAMYDIA AND MYCOPLASMA

- Versatile medium, valid for different types of samples, microorganisms and diagnostic methods.
- Avoids drying up of the sample.
- Improves microorganisms' viability between collection and inoculation.
- Decreases bacterial overgrowth in contaminated samples.
- Successfully used for molecular-based assays.



DESCRIPTION	CAT. No.	CLASS	TUBE SIZE	VOLUME	SAMPLE COLLECTION DEVICE	PACK SIZE
TRANSPORT MEDIUM	TM018	CE IVDR	16x100 mm tube	2 ml	1 sterile mini tip flocced swab	50 units
TRANSPORT MEDIUM	TM014	CE IVDR	16x100 mm tube	2 ml	1 sterile nylon microfiber swab	50 units
TRANSPORT MEDIUM	TM016	CE IVDR	16x100 mm tube	3 ml	1 sterile nylon microfiber swab	50 units
TRANSPORT MEDIUM	TM020	CE IVDR	16x100 mm tube	2 ml	2 sterile swabs (nylon microfiber, mini tip flocced)	50 units
TRANSPORT MEDIUM	TM010	CE IVDR	16x100 mm tube	2 ml	2 sterile swabs (nylon microfiber, rayon)	50 units
TRANSPORT MEDIUM	TM022	CE IVDR	16x100 mm tube	3 ml	2 sterile swabs (nylon microfiber, rayon)	50 units
TRANSPORT MEDIUM	TM021	CE IVDR	16x100 mm tube	3 ml	no swab included	50 units
TRANSPORT MEDIUM	TM003	CE IVDR	16.5x57 mm tube	2 ml	1 sterile dacron swab	50 units
TRANSPORT MEDIUM	TM006	CE IVDR	16.5x57 mm tube	2 ml	2 sterile dacron swabs	50 units
TRANSPORT MEDIUM	TM012	CE IVDR	16.5x57 mm tube	2 ml	1 sterile nylon microfiber swab	50 units
TRANSPORT MEDIUM	TM008	CE IVDR	16.5x57 mm tube	3 ml	1 sterile nylon microfiber swab	50 units
TRANSPORT MEDIUM	TM011	CE IVDR	16.5x57 mm tube	2 ml	1 sterile rayon swab	50 units
TRANSPORT MEDIUM	TM001	CE IVDR	16.5x57 mm tube	2 ml	2 sterile rayon swabs	50 units
TRANSPORT MEDIUM	TM005	CE IVDR	16.5x57 mm tube	2 ml	no swab included	50 units
TRANSPORT MEDIUM	TM002	CE IVDR	16.5x57 mm tube	3 ml	no swab included	50 units
TRANSPORT MEDIUM	TM004	CE IVDR	53x108 mm bottle	100 ml	no swab included	1 unit
TRANSPORT MEDIUM-2	TM015	CE IVDR	16x100 mm tube	1 ml	1 saliva collection device	50 units

\* Note that some of these references are subject to a minimum order requirement.

# Cell Lines

## ACCESSIBLE CELL CULTURE FOR HUMAN CLINICAL VIROLOGY

- Ready-to-use (shell-vial and tubes) and bulk (flasks and suspensions) presentations.
- Consistent quality. Fresh cells.
- Complementary products available: monoclonal antibodies and transport media.
- Pack size: Shell vials (24 units), tubes (24 units), suspension (1 unit) and flask (75 cm<sup>2</sup>)
- Products only available in the EU.



### LABORATORY MATERIAL

Cell Lines	Shell Vials	Tube	Suspension	Flask
A549 CELL LINE	VSA5	VTA5	SA5	FTA5
B95-8 CELL LINE*				FTB95
BGM CELL LINE*	VSBG			FTBG
BHK-21 CELL LINE				FTBH
HEp-2 CELL LINE	VSHE	VTHE		FTHE
L-929 CELL LINE				FTL9
LLC-MK <sub>2</sub> CELL LINE*	VSLL	VTLL		FTLL
McCoy CELL LINE	VSMC			FTMC
MDCK CELL LINE	VSMC	VTMD	SMD	FTMD
MDCK-SIAT1 CELL LINE				FTMS
MRC-5 CELL LINE	VSMR	VTMR	SMR	FTMR
RD CELL LINE	VSRD	VTRD		FTRD
VERO CELL LINE*	VSVE	VTVE	SVE	FTVE
VERO E6 CELL LINE*	VSV6	VTV6		FTV6

\* Note that some of these references are subject to a minimum order requirement.

---

## Ordering Information

### Placing orders

When ordering, please specify:

- Company name
- Ship to and bill to address
- Product catalogue number and description
- Unit size and quantity
- Special shipping conditions, if any

### Free samples policy

Samples are available free of charge for testing purposes. Please contact your Area Manager to ask for our sample request form.

### Order cancellation

Requests for cancellation should be submitted one week in advance for cell culture products. For the rest of the product lines, three days advanced notice is required.

---

## Terms and Conditions

### Prices

The product price shall be as specified in our current price list on the date of the order. We reserve the right to revise our prices at any time with a minimum of 1 month prior notice. Unless stated otherwise in writing, all prices are ex-works.

---

## Technical Support

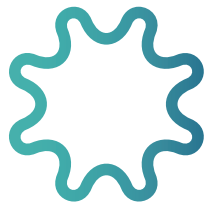
For technical assistance and product information, please visit our website or contact our Technical Service Department at [customerservice@vircell.com](mailto:customerservice@vircell.com)

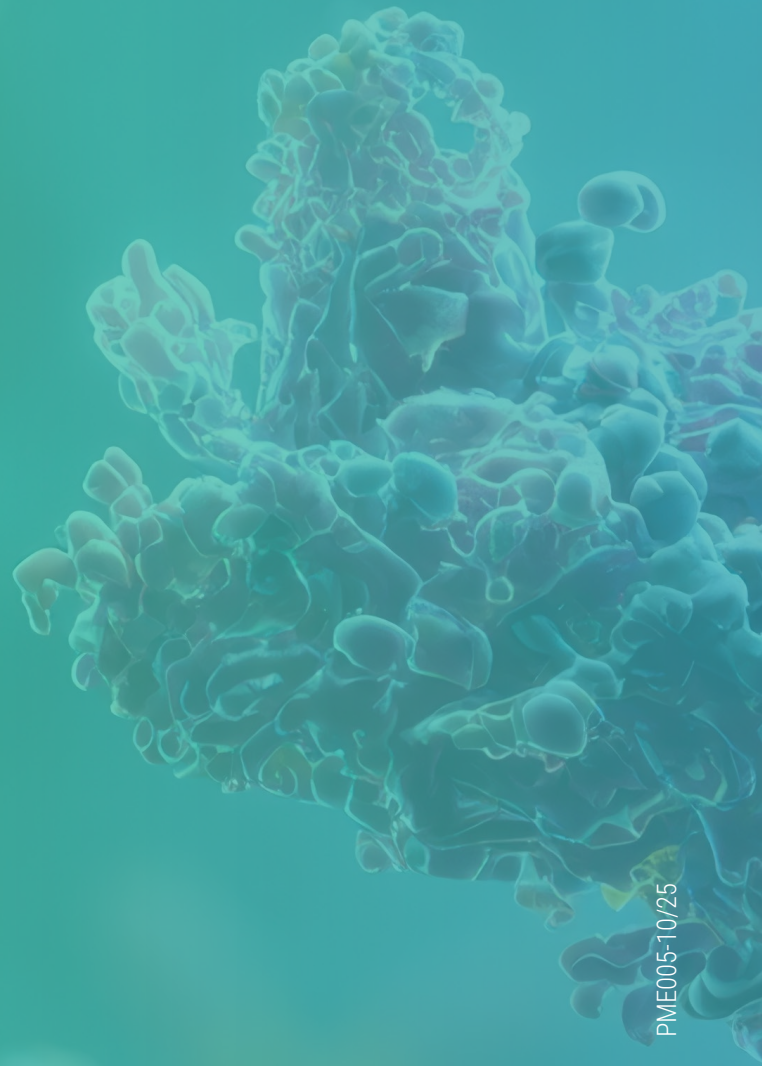
We strive to answer all emails within 24 hours, and most are answered in substantially less time.

---

## Instructions For Use

These documents are available in digital format (eIFU) on our website. You can download them on any device, which only requires an Internet connection and a software compatible with a PDF format, such as Adobe Acrobat Reader®





PME005-10/25

**Vircell, S.L.**  
Parque Tecnológico de la Salud  
Calle Avicena, 8  
18016 Granada, Spain  
Tel: +34 958 441 264  
Email: [info@vircell.com](mailto:info@vircell.com)  
[www.vircell.com](http://www.vircell.com)

